

# MOSQUITO ABATEMENT

ST. TAMMANY PARISH



# 2024

## APRIL monthly report

St. Tammany Parish Mosquito Abatement



# Letter from the Director



Director Kevin Caillouet, Ph.D., M.S.P.H.

The high mosquito numbers St. Tammany Parish residents have been experiencing since February continued in April. *Culex salinarius*, the brown salt marsh mosquito, continues to dominate mosquito trap collections particularly along the coastal areas. During 285 trap events, Mosquito Abatement collected 111,551 mosquitoes in April, 77% of those being *Cx. salinarius*.

To combat these mosquitoes 109 ultra-low volume adulticide applications were made by truck covering 68,015 acres. Another 95,554 acres were treated to abate adult mosquitoes by Mosquito Abatement aircraft including four missions with the fixed wing Twin Otter and one with the rotary-wing Bell 407 GXi. Larval *Cx. salinarius* mosquitoes in 160 acres near Avery Estates in Slidell were also managed by helicopter applying a larvicide treatment in April.

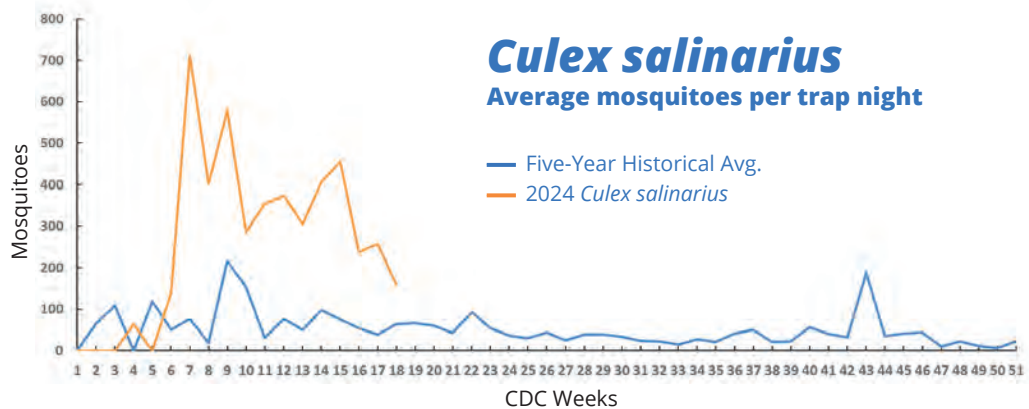
In April, we hosted seven international visitors from six different countries for a tour of the STPMAD facilities. These guests are leaders in their countries visiting the United States as part of the State Department's International Visiting Leadership Program (IVLP) learning from our approach to complex environmental problems including mosquito-transmitted diseases.

Renovations continue on the Mosquito Abatement administration building by contractor Voelkel McWilliams and design work by MSH Architects. The work, which is scheduled to be completed in late June, adds onsite laundry and locker rooms for insecticide safety and increases available administrative offices.

We look forward to the completion of this construction project to better serve St. Tammany residents in the safest manner possible for years to come.

Yours in health,

Kevin A. Caillouet, Ph.D., M.S.P.H.  
Director



Average *Culex salinarius* per trap night compared to five-year historical data.

On the cover (clockwise from the top):

- Twin Otter aircraft waits on the runway.
- Director Kevin Caillouet demonstrates how avian diversity impacts arboviruses.
- Bell 407 GXi larvicides the marsh to treat *Culex salinarius*.
- International visitors tour the STPMAD aircraft in our hangar.

# Top Two Species Trapped in April



***Culex salinarius***

85,850

Trapped in April

**Common name: brackish marsh mosquito**

A serious pest that is produced in fresh to brackish marshes. It frequently bites large mammals (including people) and birds. Considered an important secondary WNV vector.



***Aedes vexans***

13,437

Trapped in April

**Common name: inland floodwater mosquito**

This floodwater mosquito lays its eggs in areas above the waterline where the area will eventually be flooded after a rain event. It frequently bites large mammals, humans and birds and is competent at transmitting West Nile virus.

Pictured clockwise from top left - A&P Mechanic Guthrie George; Mosquitoes from trap; Biologist Haley Marquette; Night Driver Sherman Alexander.

**95,554**

acres treated by air



**111,551**

total mosquitoes trapped



**82,220**

acres treated by truck



**188**

property inspections



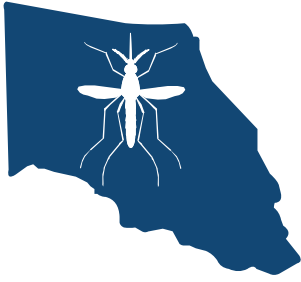
## April Arbovirus Report



**None of the 757 pools of mosquitoes tested from specimens collected during April 2024 were positive for West Nile virus (WNV).** Adult mosquitoes are collected using No Light CO<sub>2</sub>-baited CDC traps and tested in pools (or groups) via RT-PCR, by the Louisiana Arbovirus Disease Diagnostic Laboratory (LADDL) in Baton Rouge.

A total of 38,924 mosquitoes were collected and tested for WNV during April 2024 across St. Tammany Parish. Populations of *Culex salinarius*, a secondary WNV vector, accounted for 75.9% of mosquitoes submitted for virus testing. *Aedes vexans*, another secondary WNV vector and second most abundant species comprised 18.0% of the mosquitoes collected and tested for WNV.

**The Louisiana Department of Health has reported no cases of West Nile disease year-to-date in region 9, which contains St. Tammany and four other neighboring parishes.**



# MOSQUITO ABATEMENT

ST. TAMMANY PARISH



62436 Airport Road  
Slidell, LA 70460



[info@stpmad.org](mailto:info@stpmad.org)  
[www.stpmad.org](http://www.stpmad.org)



office: 985.643.5050  
fax: 985.649.7325